



Customer: Medical Mary
 Address: 3079 S Baldwin Rd #192, Lake Orion, MI, 48359
 Sample ID: Mixed Pectin SQ. BS-25mg
 Matrix: Edible
 Labnumber: 22D0147-12 Total mass or volume per unit (g or mL): 4.4455

Cannabinoid Profile

Test Conditions: 18°C
 Extraction Technician: SH
 Analytical Chemist: CB

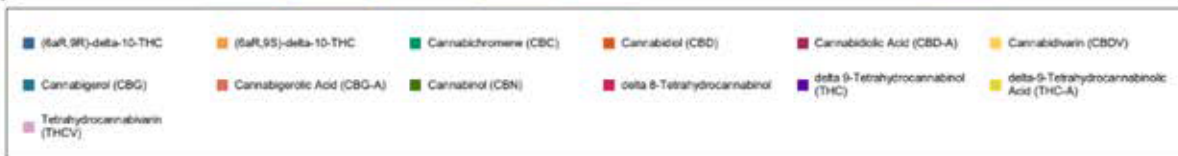
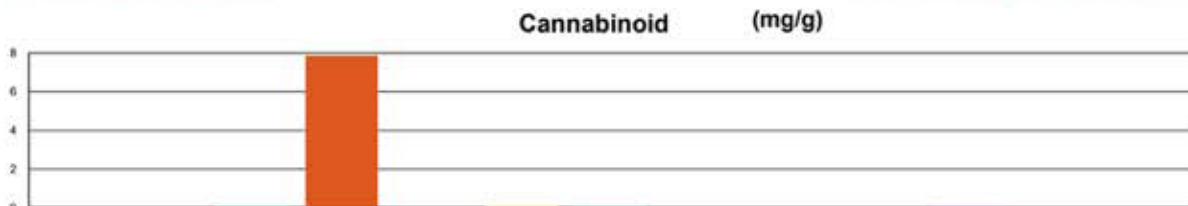
Extraction Date(s)	Analysis Date(s)
4/27/2023	5/2/2023

Cannabinoids (HPLC)	Results			
	LOD (mg/g)	%	mg/g	mg/Gummy
Cannabidiarin (CBDV)		0.004	0.036	0.162
Cannabidiolic Acid (CBD-A)	<0.030			
Cannabigerolic Acid (CBG-A)	<0.030			
Cannabigerol (CBG)		0.005	0.055	0.243
Cannabidiol (CBD)		0.78	7.82	34.8
Tetrahydrocannabivarin (THCV)	<0.030			
Cannabinol (CBN)	<0.030			
Cannabichromene (CBC)		0.005	0.053	0.235
delta 9-Tetrahydrocannabinol (THC)	<0.050			
delta-9-Tetrahydrocannabinolic Acid (THC-A)	<0.050			
delta 8-Tetrahydrocannabinol	<0.050			
(6aR,9S)-delta-10-THC	<0.050			
(6aR,9R)-delta-10-THC	<0.050			
Cannabinoids Total		%	mg/g	
Max Active THC (delta-9-tetrahydrocannabinol)		0.00	0.00	
Max Active CBD		0.78	7.82	
Total Cannabinoids		0.80	8.02	

Following USDA guidelines on uncertainty, Altitude Consulting's uncertainty is calculated to be +/- 2% for all cannabinoids using a coverage factor of 2 (95% confidence interval). Measurement uncertainty has not been factored into reported values.

Blank results indicate the compound was below the limit of detection.

Test Deviation:
 Run at increased injection volume.



Gary Brook - Laboratory Director - 5/2/2023

Reporting Limits will vary based on sample extraction weight used for the analysis.

The results of this report are based solely on the sample submitted and cannot be reproduced. Decision Rule: Measurement uncertainty is not accounted for in the reported values. Results are based solely on calculated numbers. Altitude Consulting makes no Statements of conformity. Pesticide, metal, and microbial analyses are subcontracted to ISO 17025 laboratories.